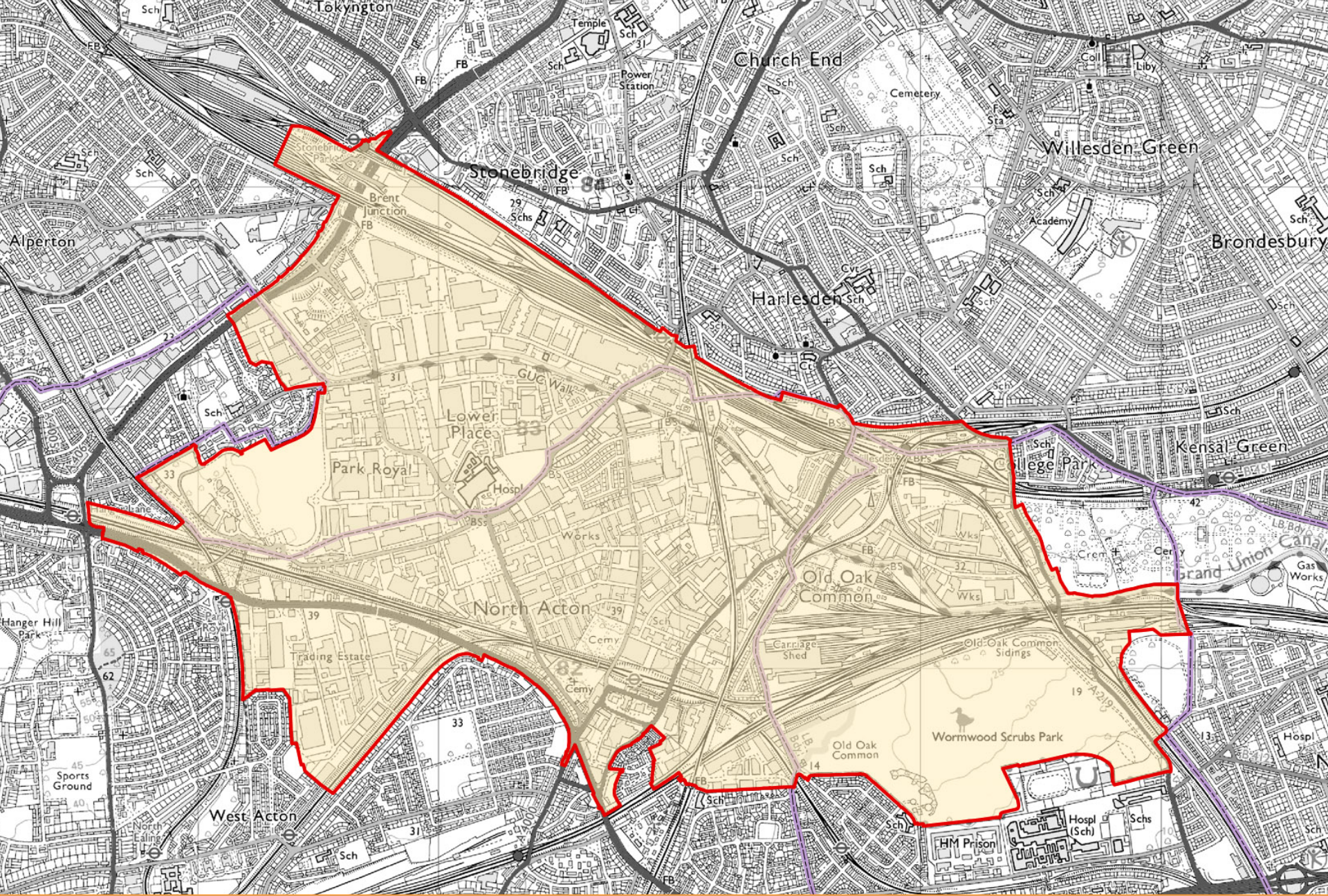
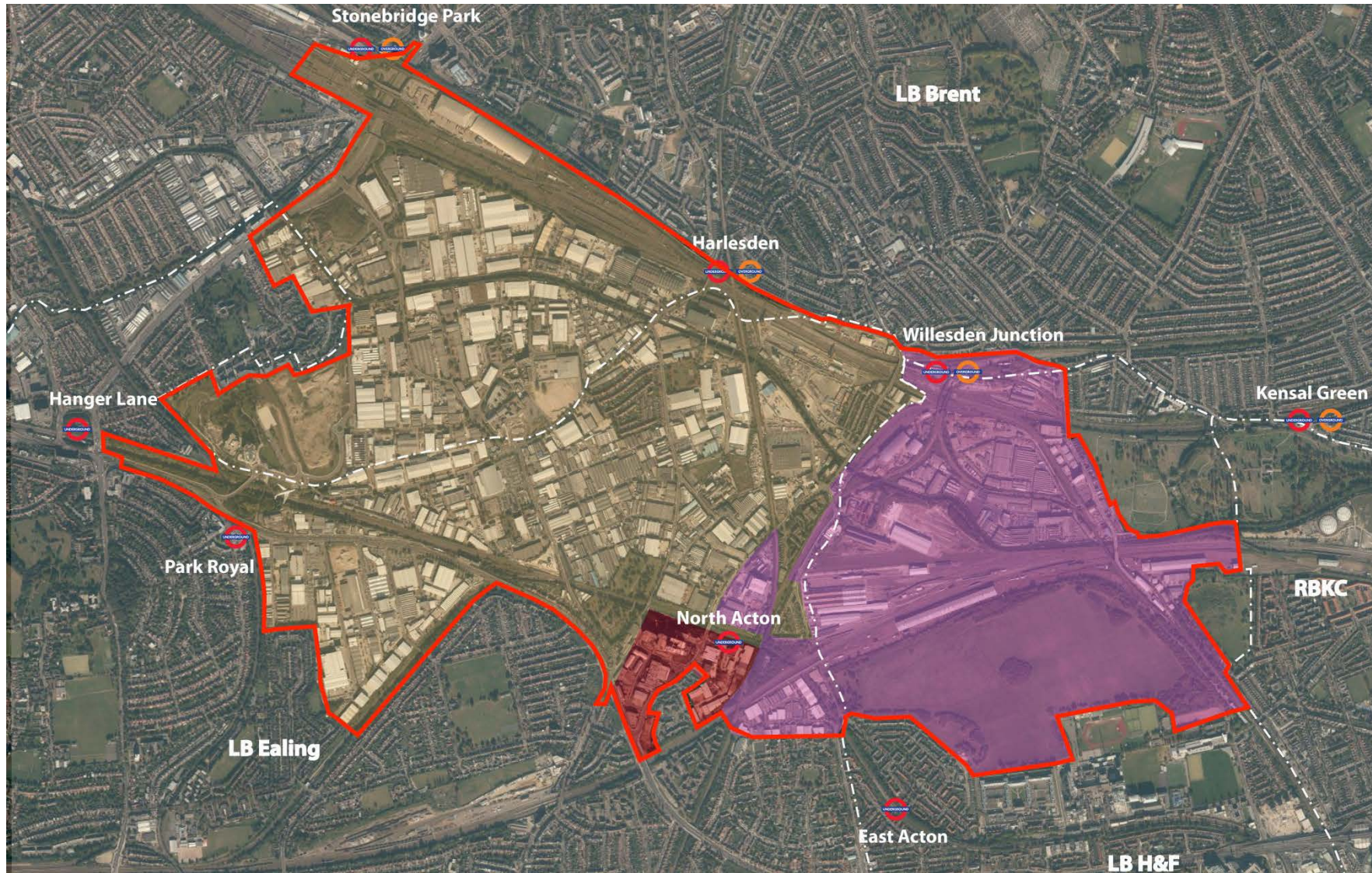


# Old Oak and Park Royal Development Corporation London Assembly Plenary 17 December 2014



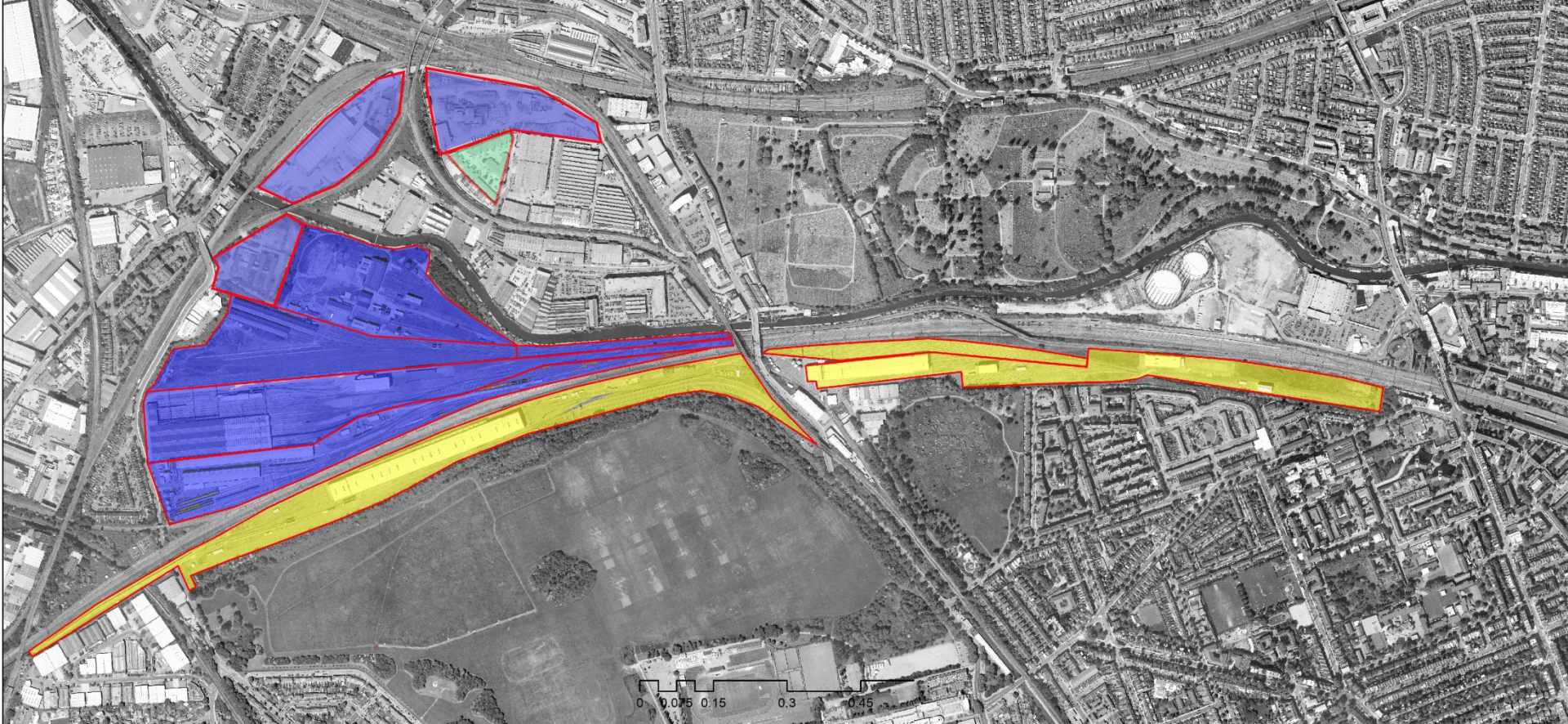


OPDC Boundary



- Area 1: Old Oak & Wormwood Scrubs - OPDC would determine major planning applications
- Area 2: North Acton - Ealing Council would determine all planning applications
- Area 3: Park Royal - OPDC would only determine large strategic planning applications

## Planning Application Area



## Freeholders

- Network Rail freehold
- DFT freehold
- LBHF

The Core Development area is a total of **105 hectares**  
**50%** of the Core Development area is in public ownership (51 hectares)  
There is a significant opportunity for public sector to benefit from uplift  
*NOTE: Car Giant own circa 20 hectares*

Public Sector Landowners